





**CONTENTS**

Editorial ..... **03 - 04**

What makes outdoor kitchens so great?..... **05 - 06**

Infinite possibilities ..... **07 - 08**

Oasis™ Compact ..... **09 - 14**

700 Series..... **15 - 18**

Built-in Prestige PRO™ ..... **19 - 22**

Bilex Series..... **23 - 26**

Outdoor Refrigerators ..... **27 - 30**

Individual Components ..... **31 - 34**

Inspiration ..... **35 - 38**

## **NAPOLEON® PREMIUM BBQs**

### **Outdoor kitchen & Built-in grills**

Dear friends of outdoor grilling,

We are very pleased to present you the selection of Napoleon® outdoor kitchens in this catalogue.

Last year, an additional series of built-in grills and burners was introduced and became a success thanks to the ample variety: the 700 series. Three grill heads of different sizes offer a degree of versatility ensuring individual outdoor kitchen design whilst maintaining the usual high quality workmanship.

For example, the shot-blasted WAVE™ cooking grids made of high-quality stainless steel offer more taste and branding. Our range of other components is also larger than ever: built-in burners now exist in three sizes and with different technologies - of course also as SIZZLE ZONE™ ceramic infrared burners.

Our refrigerators are also worth a look. Energy-efficient, equipped with bright LED lighting and with either right-hand or left-hand opening doors they also offer maximum flexibility.

In other words: enjoy browsing through the new outdoor catalogue, see it as a source of inspiration for your future plans.

Sincerely yours,  
Your Napoleon® Team









## WHAT MAKES OUTDOOR KITCHENS SO GREAT?

The barbecue exudes the wonderful aroma of grilled meat, food is already being prepared on the countertop and guests are hungrily gathering outside... a Napoleon® outdoor kitchen quickly becomes the most popular place in the garden or on the terrace.

Once you have decided on the equipment, size and shape of your outdoor kitchen, you will enjoy it for a long time. The extensive selection of grill attachments offers the right solution for every requirement and the modular system of Napoleon outdoor kitchen components offers maximum flexibility.

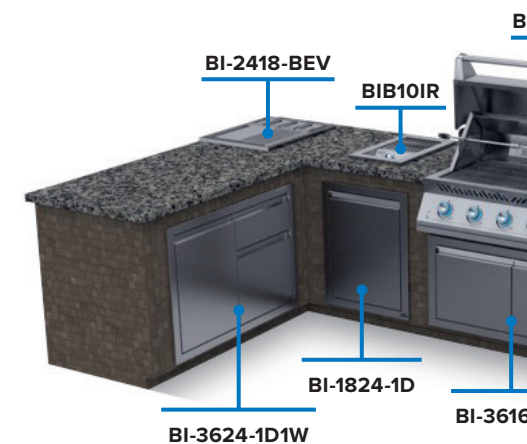
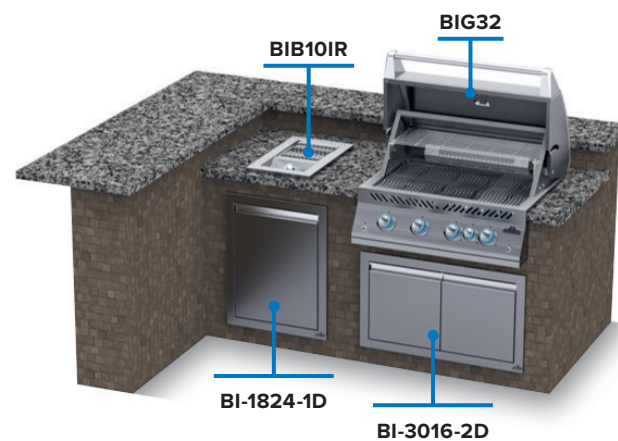
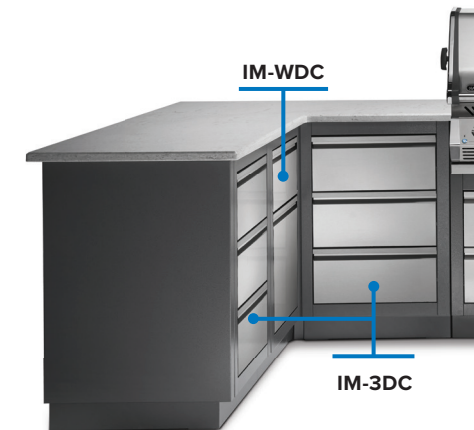
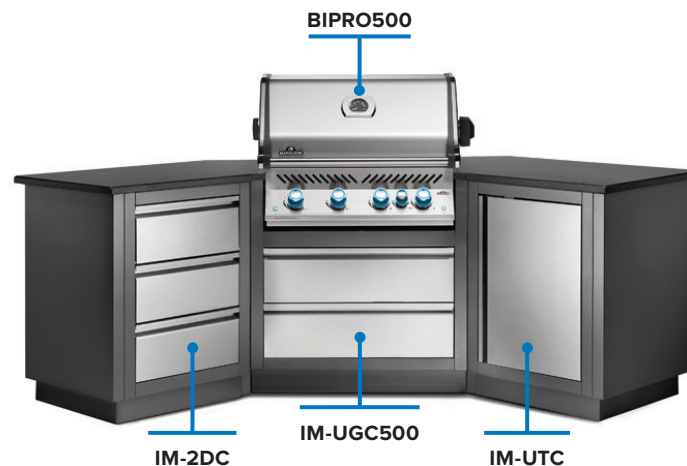
Turn your terrace or garden into an enjoyable eye-catcher - there are no limits to your imagination!

## INFINITE POSSIBILITIES

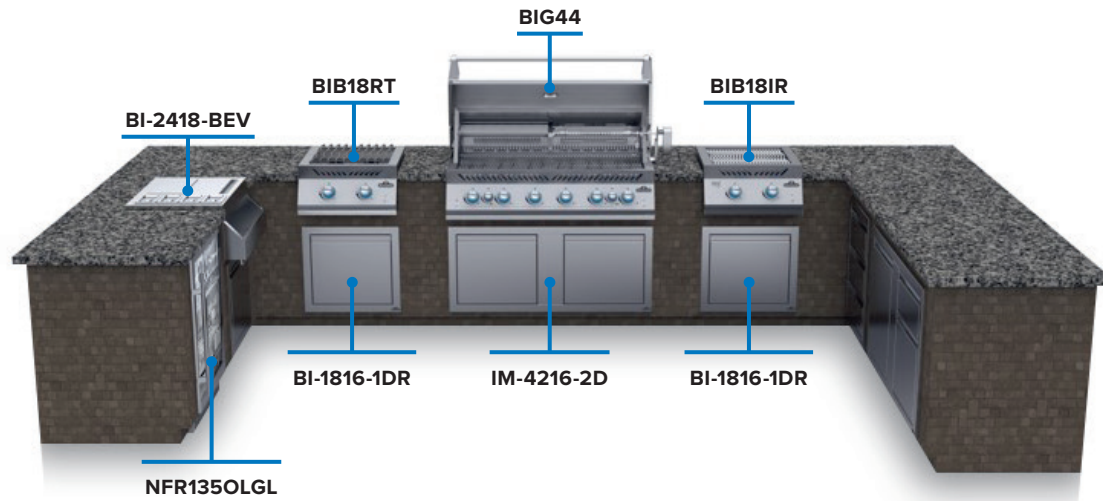
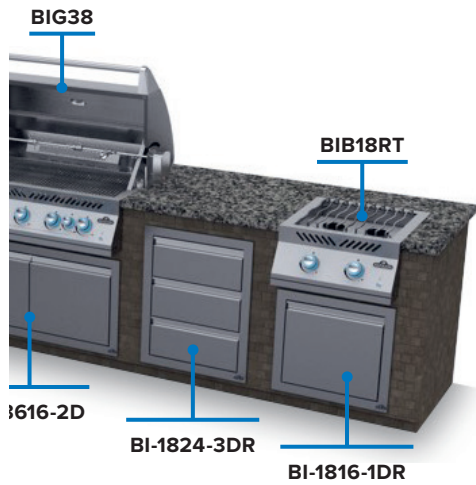
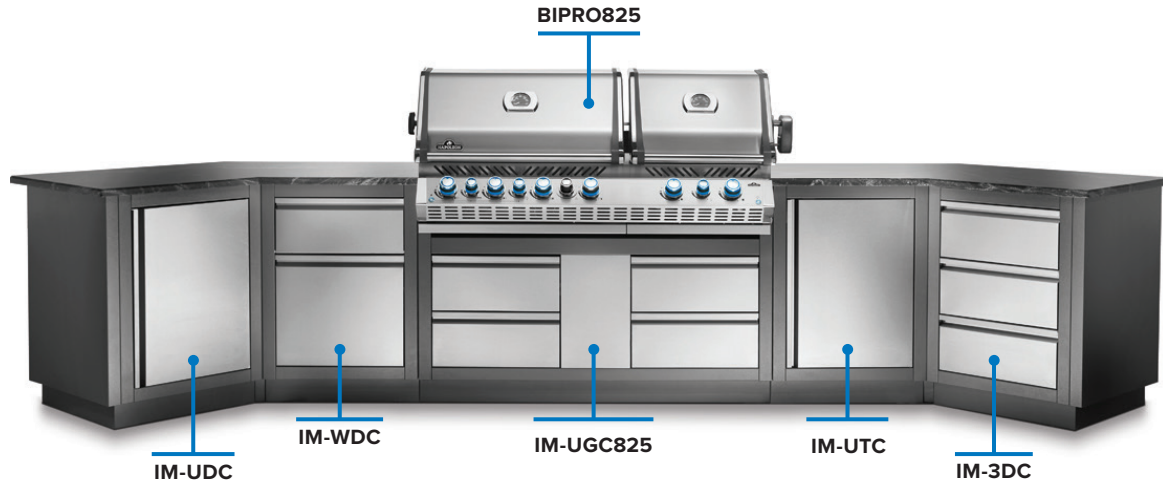
The combinations you can make for a Napoleon® outdoor kitchen are virtually limitless. They allow you to create your own personal outdoor dream!

Choosing your favourite barbecue grill head is just as much a part of your journey to a Napoleon outdoor kitchen as deciding on the most suitable and sensible modules and components - whether you are looking at side burners, drawers or refrigerators.

At the same time, the options are always coherent, visually attractive and of the highest quality. This makes putting together a Napoleon outdoor kitchen a project that is pure joy.



\*Countertop not included





## **OASIS COMPACT COMPLETE OUTDOOR KITCHEN SOLUTION**

We are excited to show you the innovation in the Napoleon® outdoor kitchen range, the Oasis™ Compact. Our goal is to create a true all-in-one outdoor kitchen solution.

The Oasis™ Compact is available with either a P500 or a BIG32-1 grill head from the 700 series, and also features an integrated SIZZLE ZONE™ infrared side burner and a drawer cabinet under the grill. Additionally, a combination waste bin and paper towel holder, a gas bottle cabinet, and a Marazzi porcelain stoneware worktop are included.

But the Oasis™ Compact also has a surprise in terms of design: for the first time, the version with the BIG32-1 grill head is available in an ultra-cool matt black finish!



ODK105P500PSS



ODK105-BIG32PSS-1  
(Rotisserie kit included)



ODK105MK-BIG32P-1  
(Rotisserie kit included)

# BLACK F



# THE NEW OAS

# LEGANCE



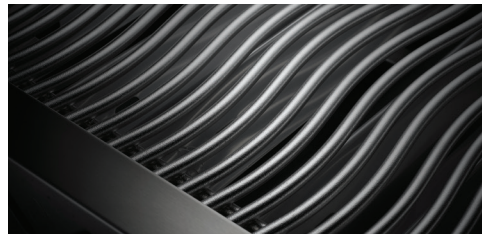
# SIS COMPACT



## OASIS COMPACT FEATURES



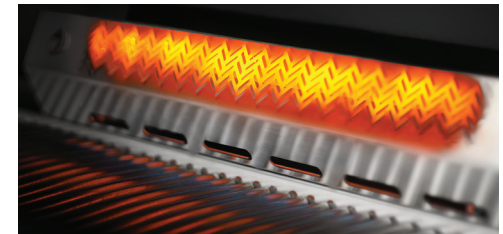
SIZZLE ZONE™ infrared drop-in burner



9,5mm shot blasted Stainless Steel WAVE™ Grates



SAFETY GLOW™ control knobs

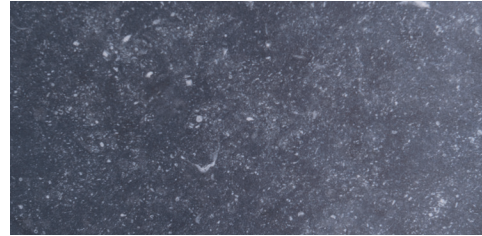


Stainless steel infrared rear burner

## INCLUDED WITH OASIS COMPACT



Including Oasis™ cabinets



Including ceramic Marazzi worktop



Including cover for the grillhead  
and SIZZLE-ZONE™



Including rotisserie kit





## BUILT-IN GRILLS OF THE 700 SERIES

Absolutely worth knowing: The Napoleon® 700 series offers an outstanding combination of first-class grillheads and burners, made of high-quality, stainless steel. Take your outdoor kitchen to a new level.

The 700 series offers grillheads in three different sizes: 32", 38" or an especially generous 44".  
All control knobs are equipped with the Napoleon® SAFTEY GLOW™ technology.

You can combine the grillheads of the 700 series individually with our 10", 12" and 18" burners - including the powerful Napoleon® SIZZLE ZONE™ as well as Range Burner and Power Burner.

The 700 series offers versatility and a particularly high-quality built-in design. Whether you use the double infrared rear burner system for independent use or prefer the included rotisserie set for perfectly grilled food - an outdoor kitchen with components of the 700 series allows you to enjoy unparalleled grilling experiences.

Experience superior performance and manufacturing quality with Napoleon's 700 Series.  
What are you waiting for? Your life with a high-quality outdoor kitchen can start!



BIG32FTPSS-1



BIG32RBPSS-1



BIG32RBPMK-1



BIG38RBPSS-1



BIG44RBPSS-1



BIB10RTPSS



BIB10IRPSS



BIB18RTPSS



BIB18IRPSS



BIB18PBPSS





## 700 SERIES GRILL FEATURES



Interior lighting for stylish barbecuing  
into the night



9,5 mm shot blasted  
stainless steel **WAVE™** grids

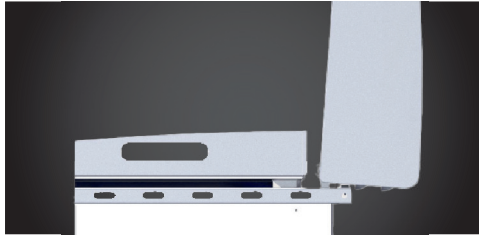


**SAFETY GLOW™**  
control knobs



**Integrated storage** for the **included** rotisserie kit

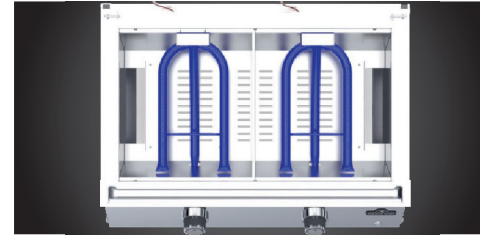
## NEW BUILT-IN GRIDDLES FEATURES



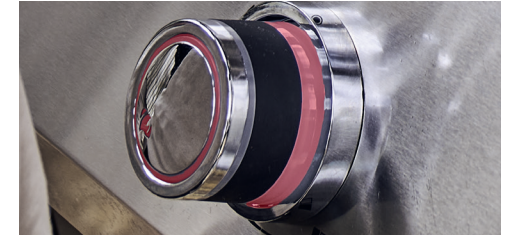
Convenient lid



Easy grease management system



Precision dual-zone cooking



**SAFETY GLOW™**  
control knobs





## BUILT-IN GRILLS OF THE PRESTIGE PRO™ SERIES

Welcome to the world of the Prestige PRO™ series - the ultimate choice for true grill enthusiasts!

This series offers a wide variety of grillheads in different sizes, including the 825 with internal SIZZLE ZONE™. The extremely robust, 9.5 mm thick stainless steel cooking grids ensure even heat distribution and perfect grilling results on all models.

The multi-colour LED control knobs are not only a visual highlight, but they are also equipped with the innovative SAFETY GLOW™ function, which ensures maximum safety.

The included rotisserie kit allows you to prepare delicious grilled food on an electrically operated rotating spit, while the infrared rear burner and the smoker drawer on the 665 and 825 further expand your grilling options.

With the Prestige PRO™ series, you can experience grilling on a new level. Designed for true barbecue professionals, our products offer quality, performance and style in perfection.



**BIPRO500RBPSS-3**

also available as Natural Gas version  
(BIPRO500RBNSS-3)



**BIPRO665RBPSS-3**

also available as Natural Gas version  
(BIPRO665RBNSS-3)



**BIPRO825RBPSS-3**





## PRESTIGE PRO™ SERIES GRILL FEATURES



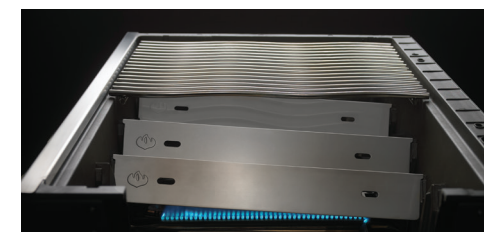
Infrared rear burner and rotisserie kit



Proximity lighting



**SAFETY GLOW™** colour changing control knobs



9,5 mm **WAVE™** stainless steel grids  
and stainless steel sear plates





## BUILT-IN GRILLS OF THE BILEX SERIES

Discover the versatility of the Napoleon® BILEX series! With two different sizes, this series offers the perfect solution for your grilling pleasure.

The i-Glow control knobs not only add a modern touch, but also allow for precise temperature control. The 7.5 mm thick stainless steel cooking grids guarantee even heat distribution and thus provide the best conditions for your grill creations.

For even more versatility, the BILEX series has a ceramic infrared rear burner. This opens up new possibilities for grilling and roasting.

The BILEX605 also has an internal SIZZLE ZONE™ for steakhouse quality cooking.



BILEX485RB



BILEX605RBI

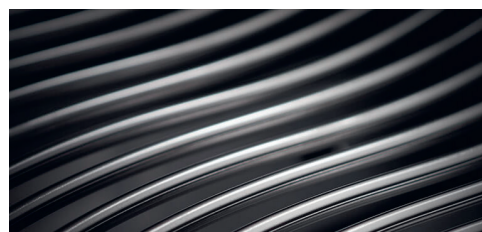




## BILEX SERIES GRILL FEATURES



**Ceramic infrared rear burner**  
for juicy rotisserie dishes



7,5 mm **WAVE™** stainless steel grids  
and stainless steel sear plates



**i-GLOW™** control knobs



**ACCU-PROBE™** thermometer





## OUTDOOR REFRIGERATORS

Our built-in refrigerators offer the perfect solution for storing food in your outdoor kitchen - with style and state-of-the-art technology.

With a bright interior thanks to double-glazed doors and LED lighting, you'll give your food the attention it deserves.

Available in 135 and 210 litre capacities, the stainless steel fridges offer a modern and durable design. Electronic temperature control with energy-efficient Eco mode ensures your food always stays fresh without putting unnecessary strain on the electricity bill.

With guaranteed IP24 moisture protection, the fridges are ready for all environments.

Our fridges match perfectly with Napoleon OASIS built-in cabinets to give your Napoleon outdoor kitchen a seamless look.

Discover the literal coolness of our high-quality built-in refrigerators now.



**NFR135OLGL**

(Door opening to the left hand side)



**NFR135ORGL**

(Door opening to the right hand side)



**NFR210ODGL**

(Both doors opening from the middle outwards)





## OUTDOOR REFRIGERATOR FEATURES



Bright interior white LED lighting



Electronic temperature control with  
energy efficient ECO mode



EC technology EBM fans with a  
65000 hour lifespan



One piece tempered safety glass  
(2 layers)



## Components

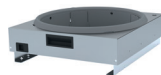
Dimensions (w x d x h)



64,1 cm x 60,1 cm x 38,7 cm

### BI-2418-BEV

Built-In beverage cooler  
with 4 smaller containers



37,5 cm x 41,3 cm x 12,7 cm

### BI-TSK

Retractable gas bottle holder



Einbau SIZZLE ZONE™

### S81013

für den Prestige 500/665,  
PRO 500 und BI 700/500



Einbau SIZZLE ZONE™

### S81014

für den Prestige PRO 665

## Refrigerators

Dimensions (w x d x h)



60,0 cm x 50,0 cm x 86,5 cm

### NFR135OLGL

Outdoor beverage cooler  
Door opening to the left  
135 litres of capacity



60,0 cm x 50,0 cm x 86,5 cm

### NFR135ORGL

Outdoor beverage cooler  
Door opening to the right  
135 litres of capacity



88,9 cm x 8,9 cm x 63,5 cm

### IM-FMP-CN

Mid run enclosure kit



88,9 cm x 61,0 cm x 68,6 cm

### IM-FEP-CN

End of run enclosure kit

## Refrigerators

Dimensions (w x d x h)



90,0 cm x 50,0 cm x 86,5 cm

### NFR210ODGL

Outdoor beverage cooler  
Double doors opening outwards  
210 litres of capacity



88,9 cm x 8,9 cm x 63,5 cm

### IM-FMPD-CN

Double Fridge Mid Panel



88,9 cm x 61 cm x 68,6 cm

### IM-FEPD-CN

Double Fridge End Panel

## Modules

Dimensions (w x d x h)



55,3 cm x 6,4 cm x 88,9 cm

### IM-45LT

45° connection



10,2 cm x 3,8 cm x 88,9 cm

### IM-WSF

Wall Spacer



61,0 cm x 5,1 cm x 78,7 cm

### IM-CEP

End panel

## Grill Cabinets

Dimensions (w x d x h)



61,0 cm x 61,0 cm x 88,9 cm

### IM-UGC18-CN

For 18" Built-in burners  
2 drawers on roller glides



88,3 cm x 61,0 cm x 88,9 cm

### IM-UGC32-CN

For BIG32RBPSS & BI32PSS  
2 drawers on roller glides



103,5 cm x 61,0 cm x 88,9 cm

### IM-UGC38-CN

For BIG38RBPSS  
2 drawers on roller glides



118,8 cm x 61,0 cm x 88,9 cm

### IM-UGC44-CN

For BIG44RBPSS  
2 drawers on roller glides

## Grill Cabinets

Dimensions (w x d x h)



88,3 cm x 61,0 cm x 88,9 cm

### IM-UGC 500-CN

For BIPRO500RB & BILEX485  
2 drawers on roller glides



103,0 cm x 61,0 cm x 88,9 cm

### IM-UGC 665-CN

For BIPRO665RB & BILEX605  
2 drawers on roller glides



140,0 cm x 61,0 cm x 88,9 cm

### IM-UGC 825-CN

For BIPRO825RBI  
4 drawers on roller glides

Built-in grills and burners can be combined with both built-in components and Oasis™ Modules.

## Modules

Dimensions (w x d x h)



61,0 cm x 61,0 cm x 88,9 cm

### IM-3DC-CN

3 drawers on roller glides



61,0 cm x 61,0 cm x 88,9 cm

### IM-2DC-CN

2 drawers on roller glides  
False top drawer to allow sink,  
side burner or ice cube tray



61 cm x 61 cm x 88,9 cm

### IM-UDC-CN

Universal door cabinet



61,0 cm x 61,0 cm x 88,9 cm

### IM-UTC-CN

Propane tank cabinet



61,0 cm x 61,0 cm x 88,9 cm

### IM-WDC-CN

Integrated kitchen roll holder  
with pull-out waste bin

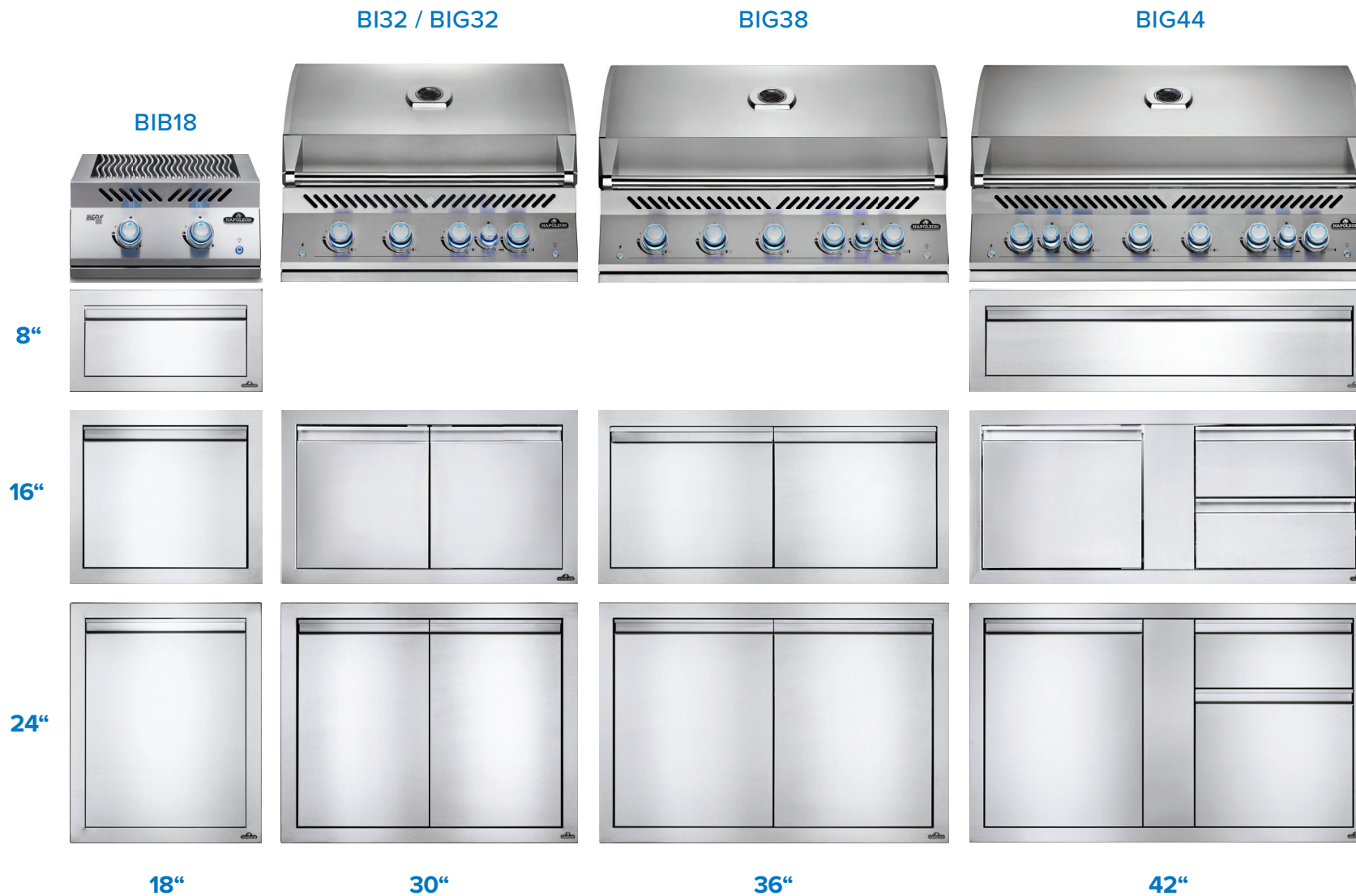




Prices can be found on our website.  
Scan the QR-code or head to  
[www.napoleon.com](http://www.napoleon.com)

# 3 HEIGHTS, 4 WIDTHS

Suitable for 700 and 500-series grills (18" / 32" / 38" / 44")



## THE COMPONENTS

There are no limits to creativity when designing a Napoleon outdoor kitchen. The following features particularly distinguish the modules. Create your own outdoor kitchen area entirely according to your wishes. With the numerous door and drawer cabinets as well as refrigerators and other practical components, you have a wide range of options when planning your outdoor kitchen.

### Components

Dimensions (w x d x h)



114,9 cm x 59,7 cm x 70,5 cm

#### BI-4224-1D1W

1 soft close door  
1 drawer  
1 drawer with waste bin



114,9 cm x 59,7 cm x 70,5 cm

#### BI-4224-1D2DR

1 soft close door  
2 drawers



114,9 cm x 59,7 cm x 70,5 cm

#### BI-4224-1D3DR

1 soft close door  
3 drawers

### Components

Dimensions (w x d x h)



100,0 cm x 59,7 cm x 70,5 cm

#### BI-3624-1D1W

1 soft close door  
1 drawer  
1 drawer with waste bin



100,0 cm x 59,7 cm x 70,5 cm

#### BI-3624-1D2DR

1 soft close door  
2 drawers



100,0 cm x 59,7 cm x 70,5 cm

#### BI-3624-1D3DR

1 soft close door  
3 drawers

### Components

Dimensions (w x d x h)



54,6 cm x 59,7 cm x 70,5 cm

#### BI-1824-1W

1 drawer with waste bin  
fake top drawer



54,6 cm x 59,7 cm x 70,5 cm

#### BI-1824-2DR

2 drawers



54,6 cm x 59,7 cm x 70,5 cm

#### BI-1824-3DR

3 drawers

## Built-in Cabinets

Dimensions (w x d x h)



84,8 cm x 9,2 cm x 50,2 cm

### BI-3016-2D

For BIG32RBPSS & BI32PSS  
2 soft close doors



114,9 cm x 9,2 cm x 50,2 cm

### BI-4216-2D

For BIG44RBPSS  
2 soft close doors



100,0 cm x 59,7 cm x 50,2 cm

### BI-3616-1D2DR

For BIG38RBPSS  
1 soft close door  
2 drawers



114,9 cm x 59,7 cm x 50,2 cm

### BI-4216-1D2DR

For BIG44RBPSS  
1 soft close door  
2 drawers

## Components

Dimensions (w x d x h)



54,6 cm x 59,7 cm x 29,8 cm

### BI-1808-1DR

1 drawer



54,6 cm x 59,7 cm x 50,2 cm

### BI-1816-1DR

1 drawer



54,6 cm x 59,7 cm x 50,2 cm

### BI-1816-2DR

2 drawers



114,9 cm x 59,7 cm x 29,8 cm

### BI-4208-1DR

1 drawer

## Components

Dimensions (w x d x h)



54,6 cm x 9,2 cm x 70,5 cm

### BI-1824-1D

1 soft close door



100,0 cm x 9,2 cm x 50,2 cm

### BI-3616-2D

2 soft close doors



84,8 cm x 9,2 cm x 70,5 cm

### BI-3024-2D

2 soft close doors



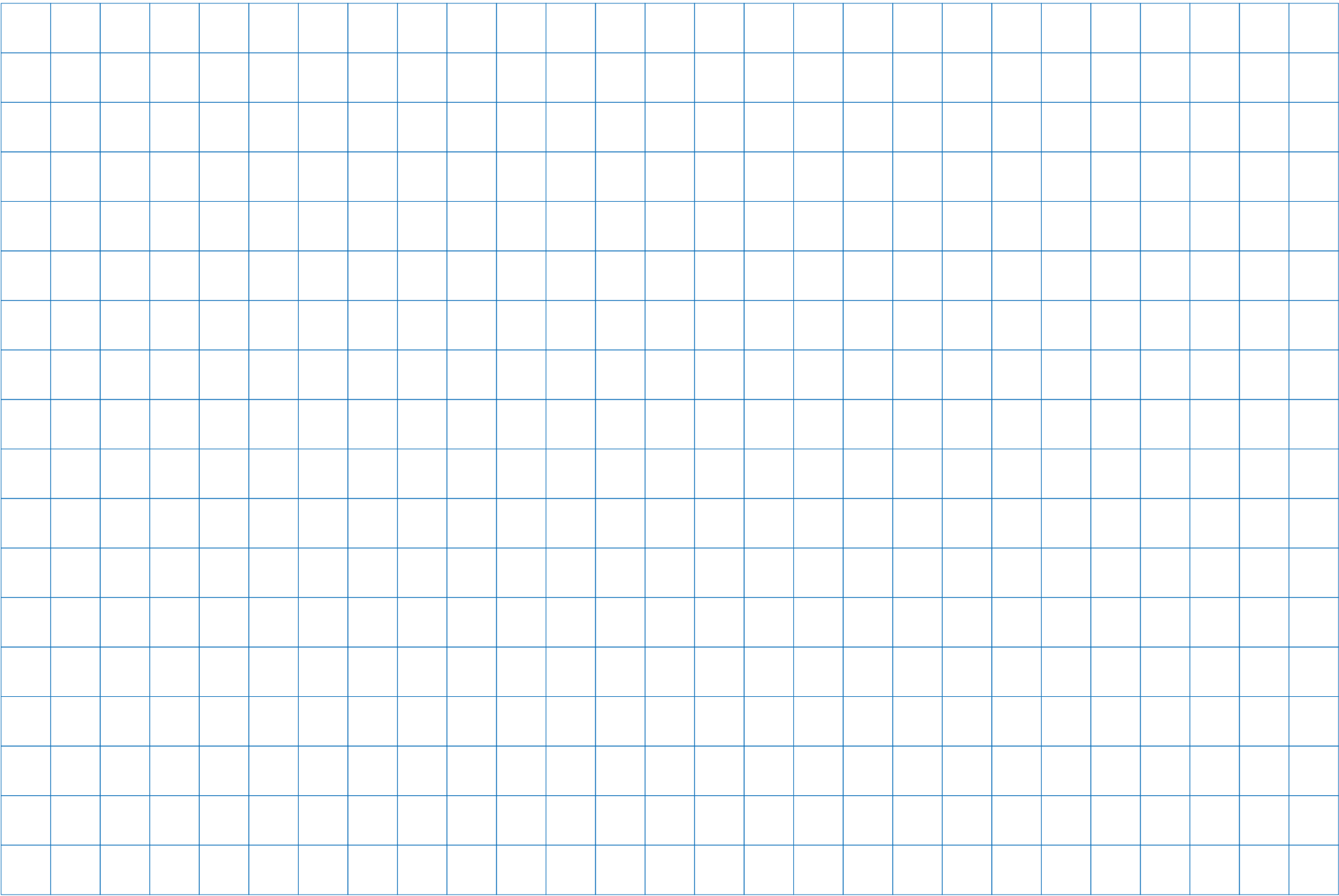
100 cm x 9,2 cm x 70,5 cm

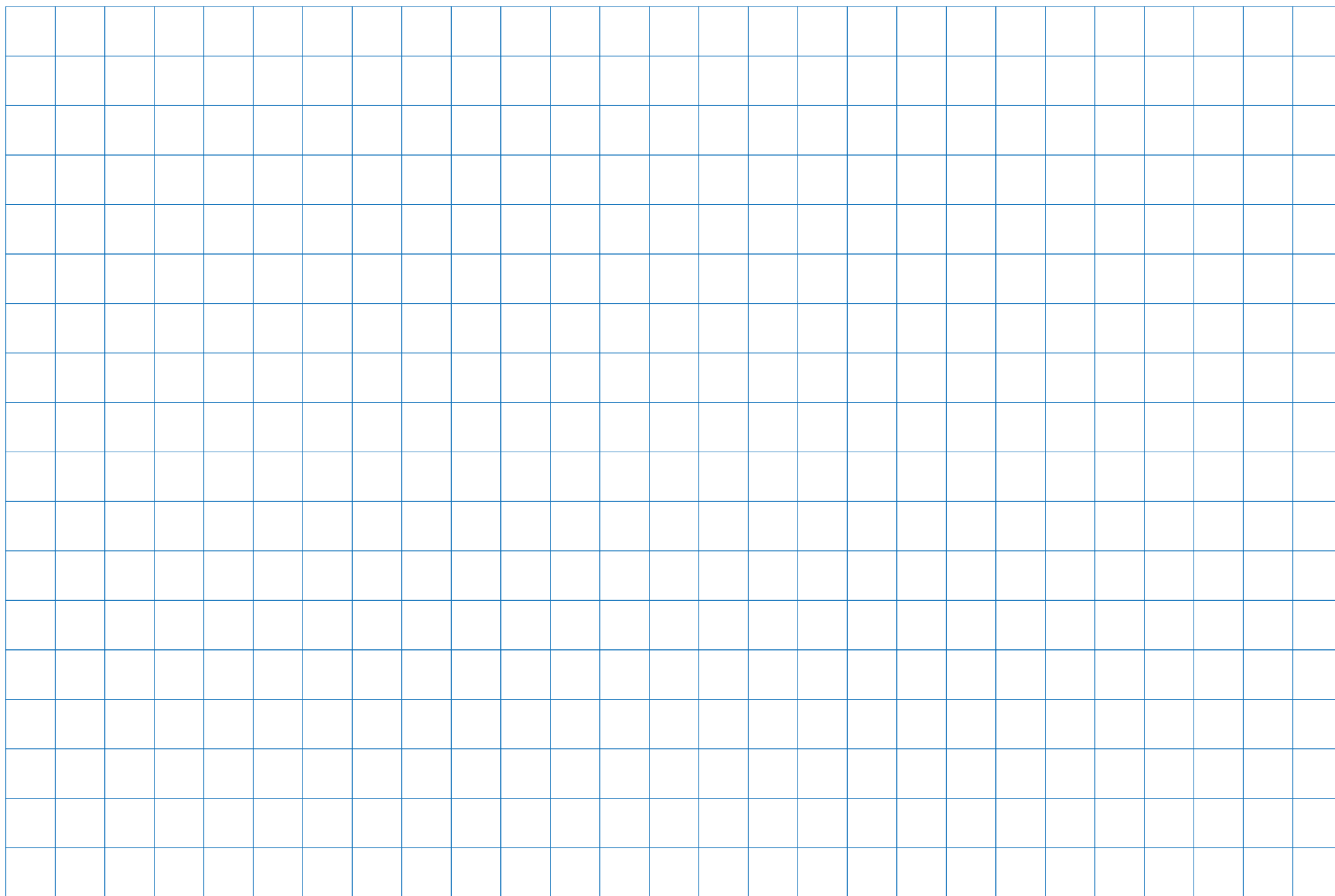
### BI-3624-2D

2 soft close doors

Built-in grills and burners can be combined with both built-in components and Oasis™ Modules.









**PREMIUM BBQs**

**Wolf Steel (UK) Ltd**

The Old Grain Store  
10-12 Home farm  
Meriden Road, Berkswell  
CV7 7SL, United Kingdom

01676 522788

info@napoleongrills.co.uk  
facebook.com/Napoleongrillsuk

**napoleon.com**

Approved by Testing Services to CE standard EN498. All specifications and designs are subject to change without prior notice due to ongoing product improvements. Consult your owner's manual for complete installation and operating instructions and check all local and national Building Codes and Regulations. Not all features available on all models. Napoleon® is a registered trademark of Wolf Steel Ltd. Images and colors may not be exactly as shown.





PREMIUM BBQs

**OUTDOOR KITCHENS & BUILT-IN GRILLS**



